



Instructions

JEEP JL - REAR SEAT DELETE 60% SUB ASSEMBLY

Thank you for purchasing your Rear Seat Delete from AAL! We greatly appreciate your trust in our company. We take that purchase and your commitment to us very seriously. If you have any questions along the way, please don't hesitate to give us a call at 385.202.4188.

****Please read these instructions thoroughly before starting this project.****



NOTE: These instructions pertain to the 60% (passenger side) component of the seat delete only. The two other connecting sub assemblies (the 40% seat delete and M.A.S.S. system) have their own respective instruction sheets. Start with this assembly first if you have purchased the 40% side and or the M.A.S.S. system.

Tools Required:

There is more than one tool for every job, but below is the list of tools we use for this installation.

- 4mm Hex Key Allen Wrench
- 5mm Hex Key Allen Wrench
- 8mm Hex Key Allen Wrench
- 10mm Hex Socket or wrench



What's included:

60% RSD Parts:

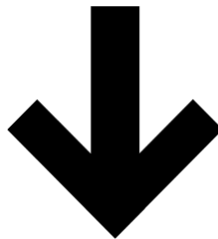
Passenger Plate	1	Rear Passenger Access Door Bracket	2
Front Passenger Support	1	Driver Access Door Brace	1
Rear Passenger Bracket	1	Rear Passenger Nut Plate	1
Rear Passenger Upper Bracket	1	Passenger Connector Bracket	1
Front Passenger Access Door	1	Passenger Side Panel Bracket Mount	1
Passenger Support Rail	1	Passenger Side panel	1
Support Rail	1	Inner Passenger Access Door Bracket	1
Front Passenger Access Door Bracket	1	Inner Passenger Floor Bracket	1
Front Passenger Nut Plate	1	Rear Side Panel Bracket Magnet	1
Driver Access Door Bracket	1	Lower Driver Bracket	1
		V2 Seat Bracket	1

Hardware:

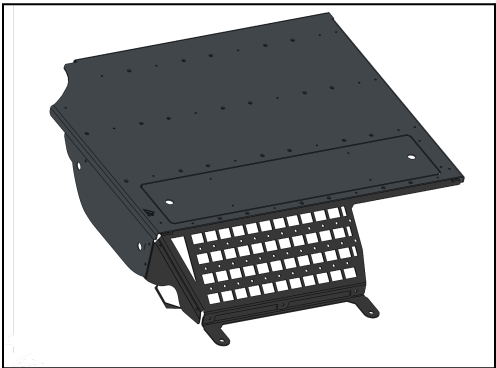
Magnet - 3/4" - Round	4	Aluminum Spacer - 12mm inner 28 outer	10
Thumb Screw Bolt - M6x12mm - 1.0 mm	3	Flat Washer - M10	2
Flat Head screws - M6x14mm - 1.0 mm	12	Button Head Bolt - M8x16mm - 1.25 mm	2
Flat Head Bolt - M6x8mm - 1.0 mm	22	Nylon Insert Nut - M8 - 1.25 mm	2
Button Head Bolt - M6x14mm - 1.0 mm	23	Button Head Bolt - M12x50 mm - 1.75 mm	4
Nylon Insert Nut - M6 - 1.00 mm	19	Flat Washer - M12	4
Hex Head Bolt - M10x50 mm - 1.50 mm	2		

Part Overview and Prep

First lets review images of all the necessary parts and hardware to ensure we have everything we need for the installation process



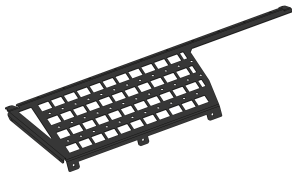
60% RSD Parts:



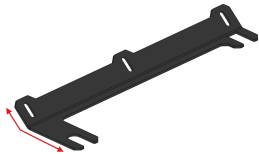
Passenger Plate:



Front Passenger Support:



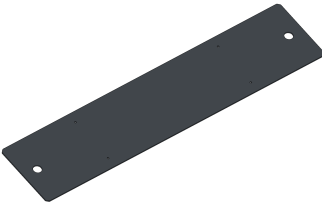
Rear Passenger Bracket:



Rear Passenger Upper Bracket:



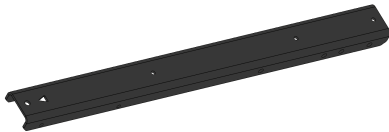
Front Passenger Access Door:



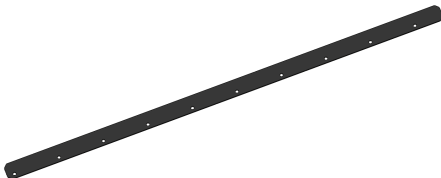
Passenger Support Rail:



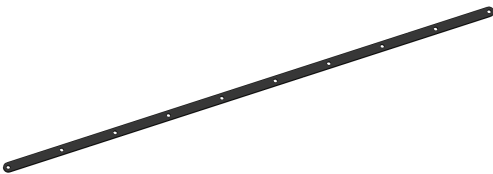
General Support Rail:



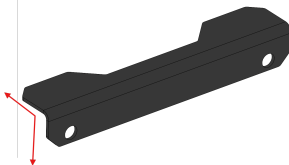
Front Passenger Access Door Bracket:



Front Passenger Nut Plate:



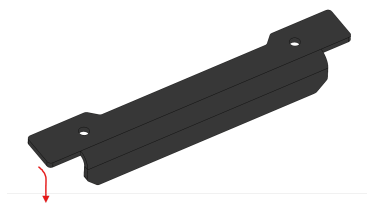
Access Door Bracket:



Rear Passenger Access Door Bracket:



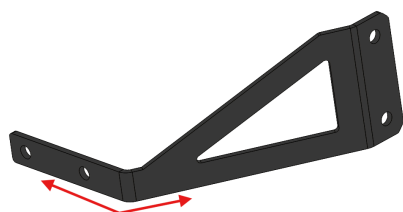
Driver Access Door Brace: **x2**



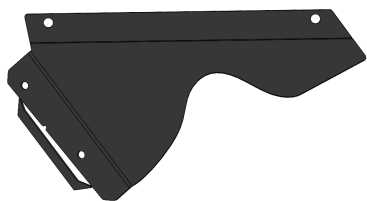
Rear Passenger Nut Plate:



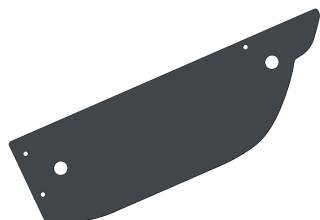
Passenger Connector Bracket:



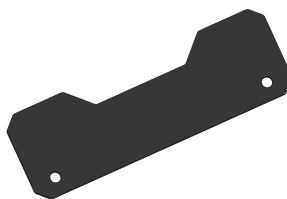
Passenger Side Panel Bracket Mount:



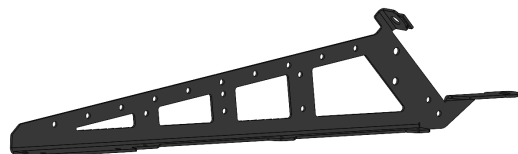
Passenger Side Panel:



Inner Passenger Access Door Bracket:



Inner Passenger Floor Bracket:



Rear Side Panel Bracket Magnet:



Lower Driver Bracket:



V2 Seat Bracket:



Hardware:

Magnet - 3/4" - Round



Thumb Screw Bolt - M6x12 mm



Flat Head Bolt - M6x14 mm



Flat Head Bolt - M6x8 mm



Button Head Bolt - M6x14 mm



Nylon Insert Hex Nut - M6



Hex Head Bolt - M10x50 mm



4 Aluminum spacer - 12mm inner - 28 outer 22



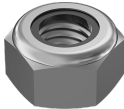
3 Flat Washer - M10 2



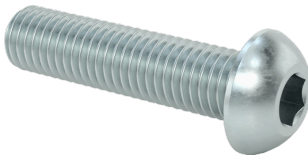
Button Head Bolt - M8x16 mm 2



12 Nylon Insert Nut - M8 2



23 Button Head Bolt - M12x50 mm 4



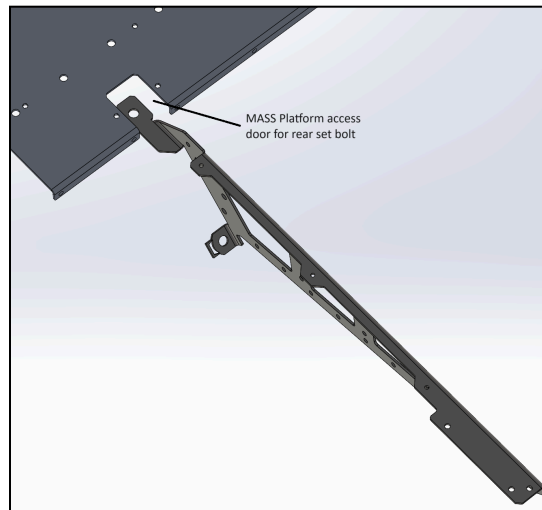
19 Flat Washer - M12 4



2

Once we've confirmed that we have everything, we can begin constructing by preparing the truck bed for installation:

- i) The first step is to remove all rear floor mats, the accompanying snaps that hold them in, and the rear seats themselves. The base carpets can stay in place. The base should look completely empty
- ii) If you currently have a MASS platform installed, you will need to remove the small access cover on the driver side front of the platform towards the middle. This will give you access to the one bolt holding the seat assembly. **Do not discard, as it will be reinstalled.**



- iii) The last preliminary step is to move the front driver and passenger seats forward all the way and remove the two rear **T50 Torx** anchor bolts on the passenger side front seat. Once removed, In the recess of the seat rails (see photo), place **(6) 12mm inner - 28 mm outer Aluminum spacers** for each seat bolt. These are necessary for proper fitting of the mounting brackets.



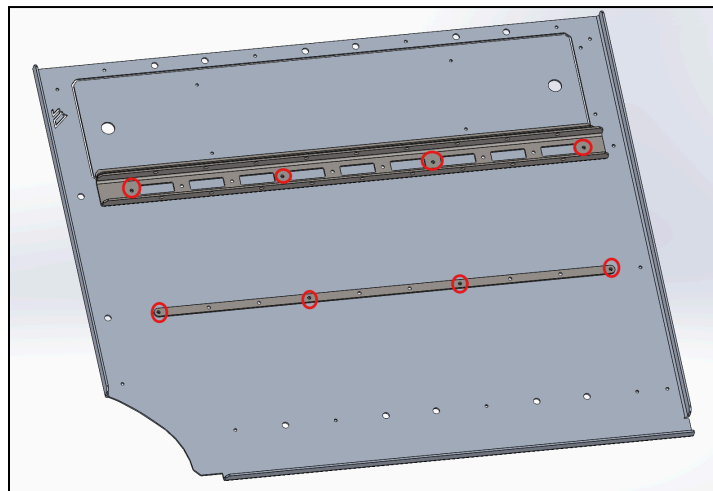
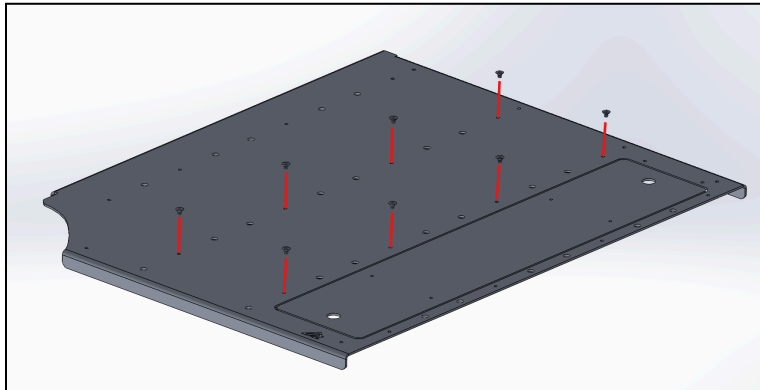
Do this on both sides of the rear of the front passenger seat. Once these steps are complete, we can take a look at all of the parts and hardware required to begin assembly



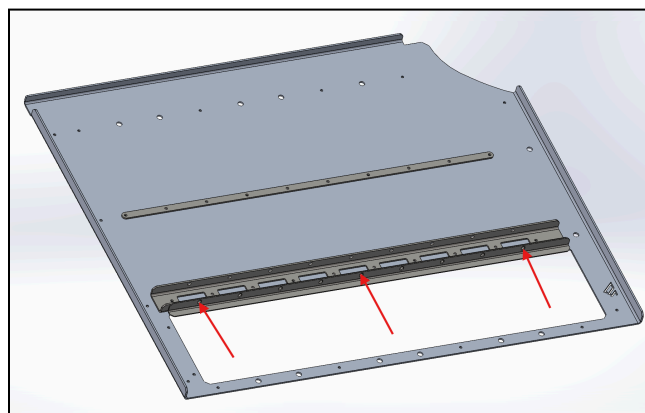
Step 1 - Attach Brackets to the Passenger Plate

Using (8) Flat Head - M6x8 mm Bolts (No Nuts Necessary), attach the **Passenger Support Rail**, and the **Front Passenger Nut Plate** to the **Passenger plate**.

Note: every hole designated for a countersunk bolt in the main panel has a hexagon shaped hole.

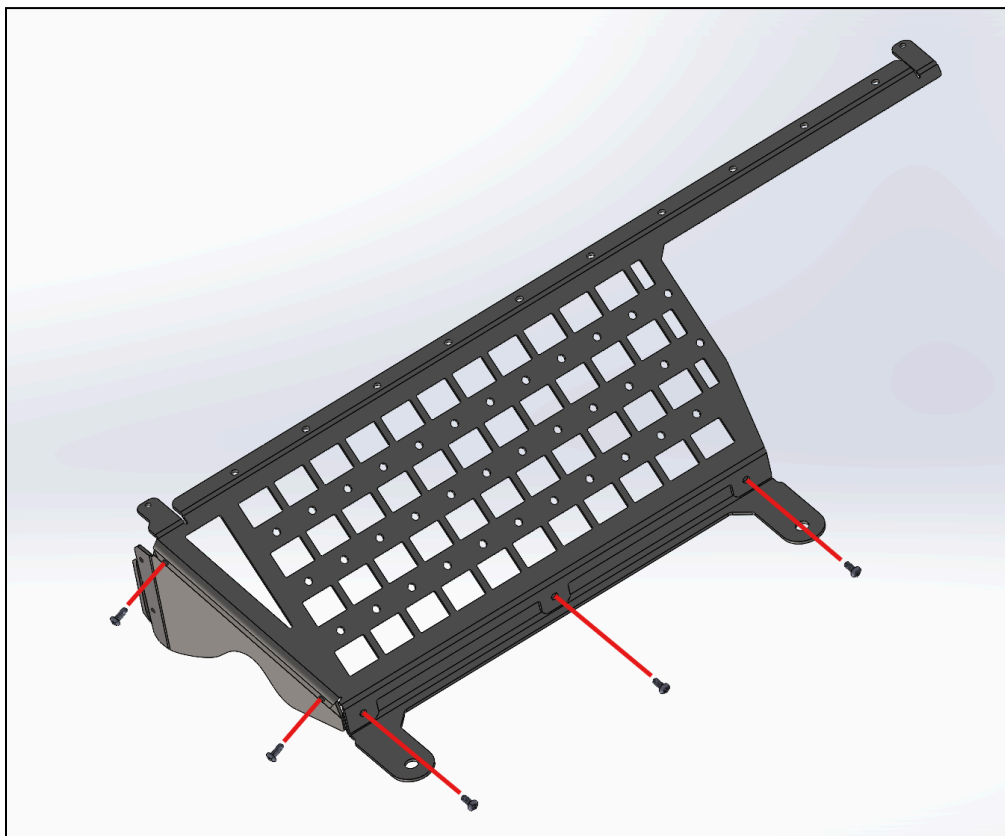


Using (3) Button Head - M6x14 mm Bolts and (3) Nylon Insert - M6 Hex Nuts, attach the **Rear Passenger Access Door Bracket** to the **Passenger Support Rail**

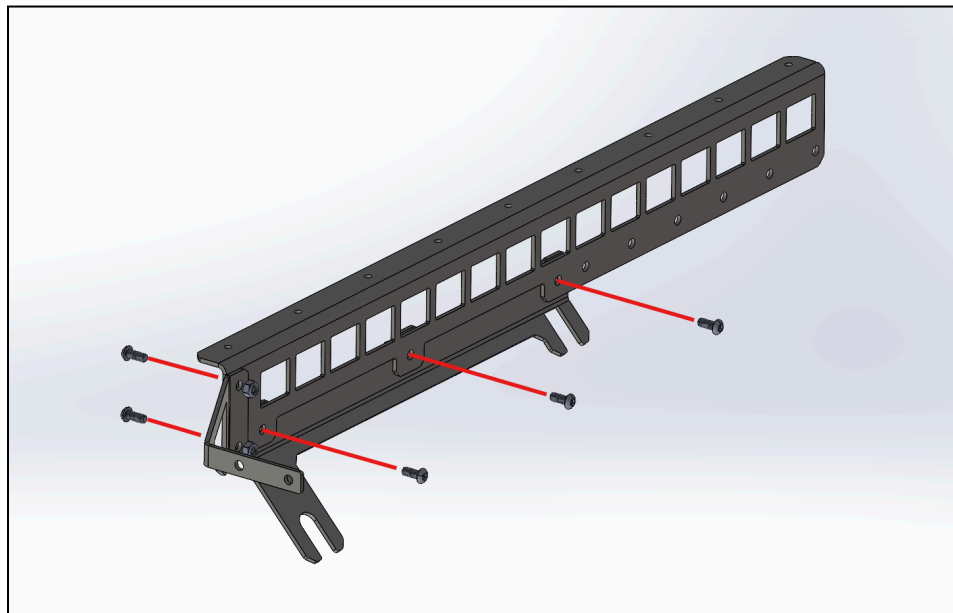
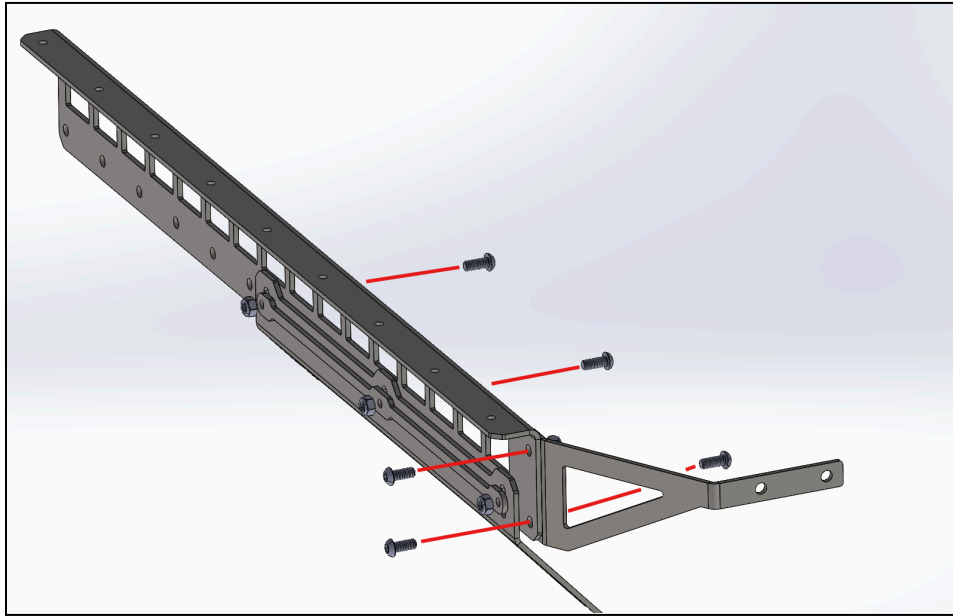


Step 2 - Construct the Platform perimeter pieces

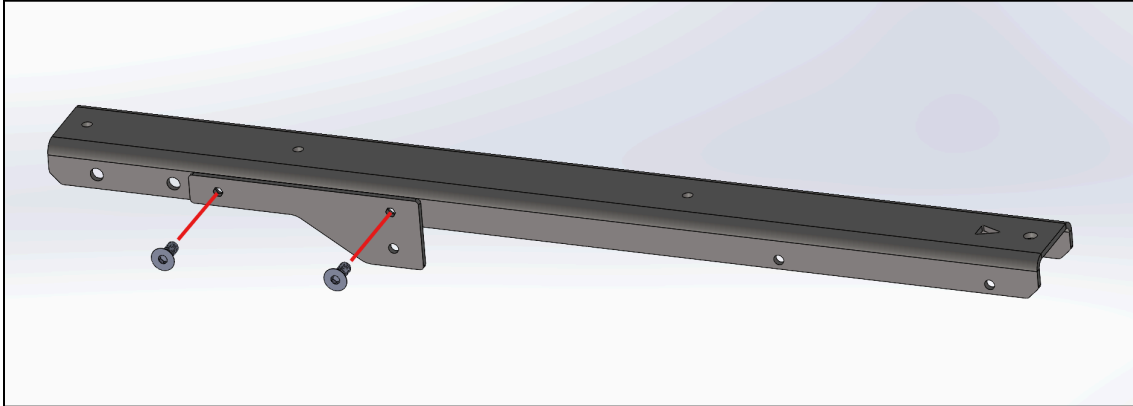
Using (5) Button Head - M6x14 mm Bolts and (5) Nylon Insert - M6 Hex Nuts, attach the **Passenger Side Panel Bracket Mount** and the **Lower Driver Bracket** to the **Front Passenger Support**



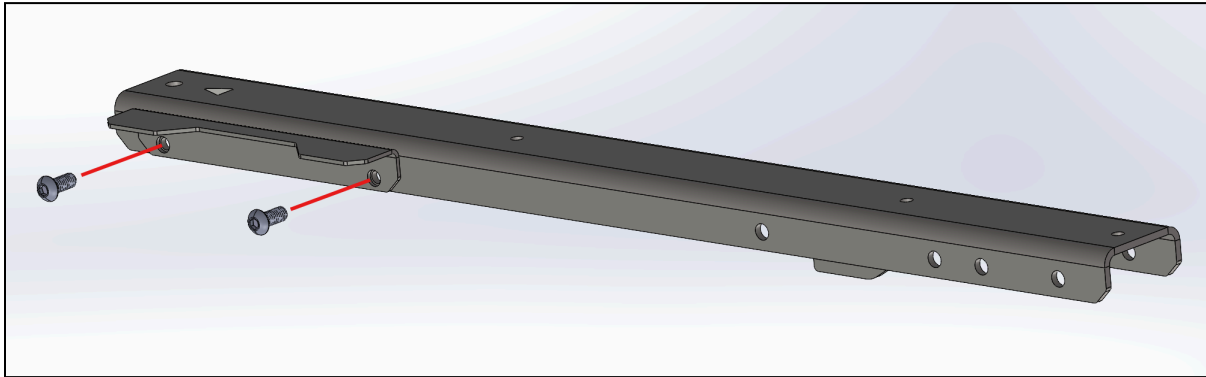
We'll then repeat a similar process to construct the rest of the perimeter. Using **(5) Button Head - M6x14 mm Bolts** and **(5) Nylon Insert - M6 Hex Nuts**, attach the **Rear Passenger Nut Plate**, **Rear Passenger Bracket**, and **Passenger Connector Bracket** to the **Rear Passenger Upper Bracket**.



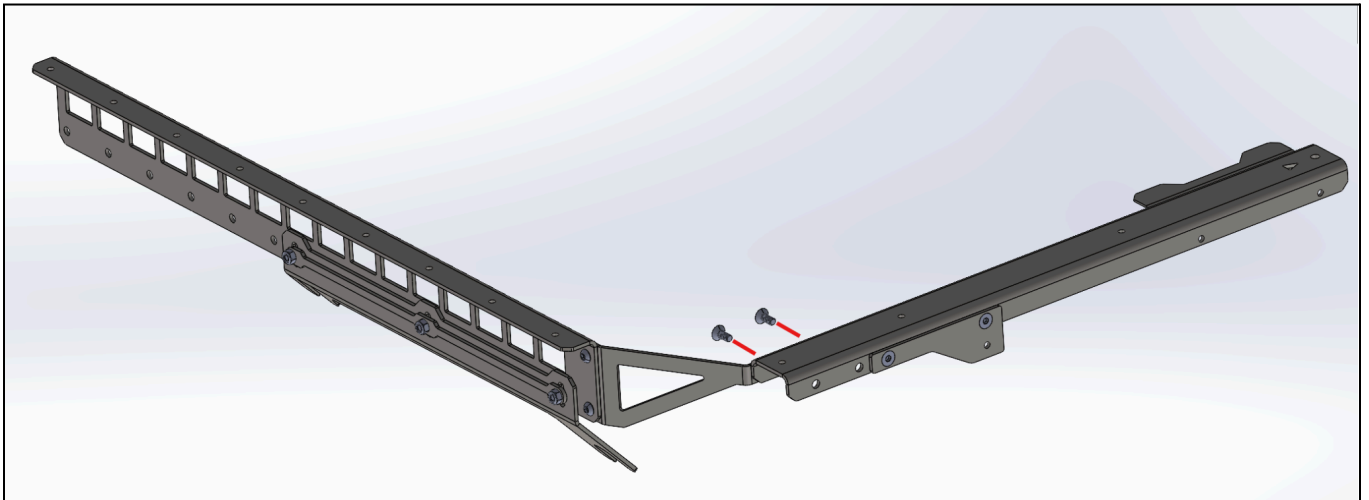
We'll then attach the **Rear Side Panel Bracket Magnet** to the **Support Rail** using **(2) Flat Head - M6x14 mm Bolts** and **(2) Nylon Insert - M6 Hex Nuts**



We'll attach the **Access Door Bracket** to **Support Rail** using **(2) Button Head - M6x14 mm Bolts** and **(2) Nylon Insert - M6 Hex Nuts**

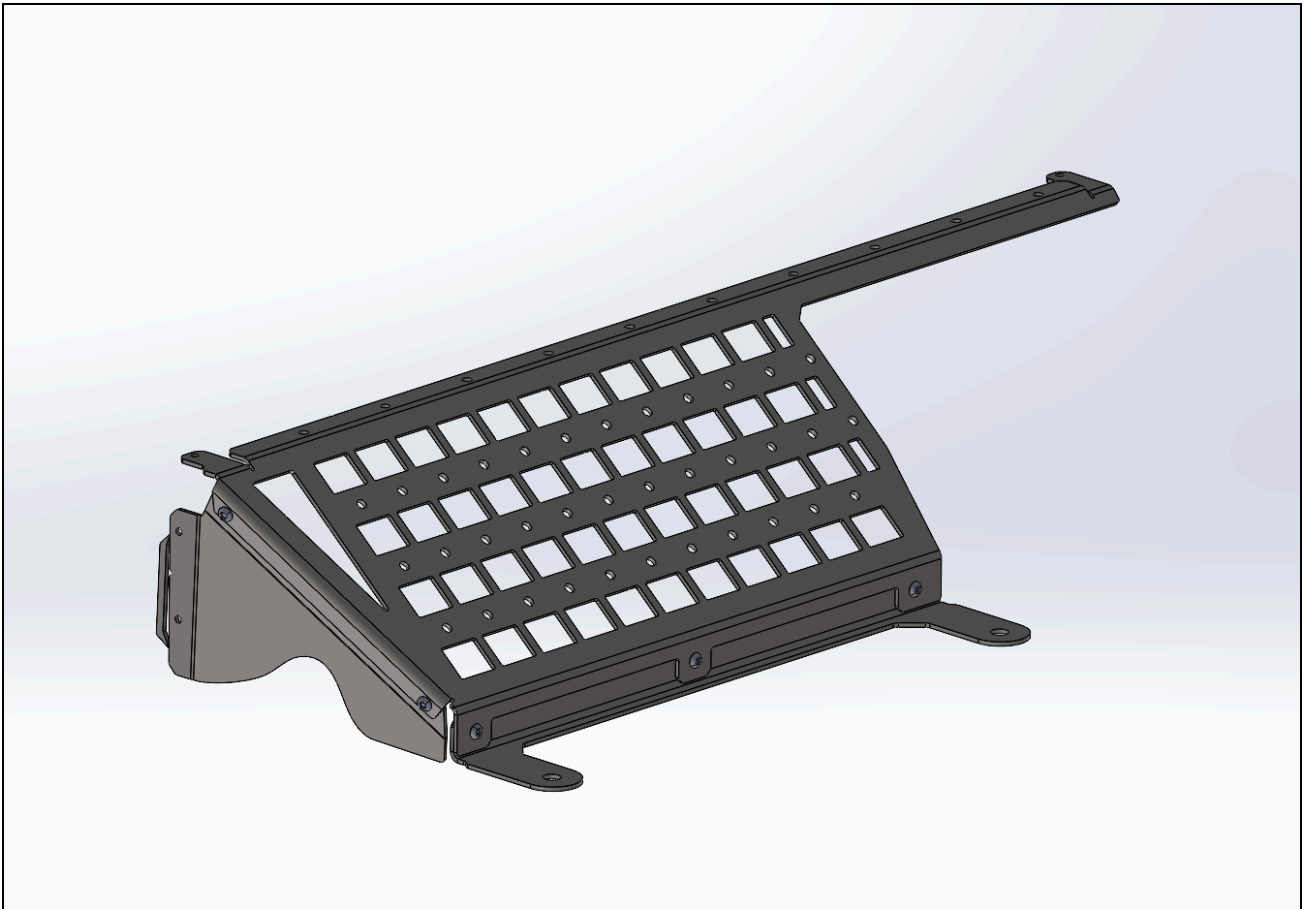
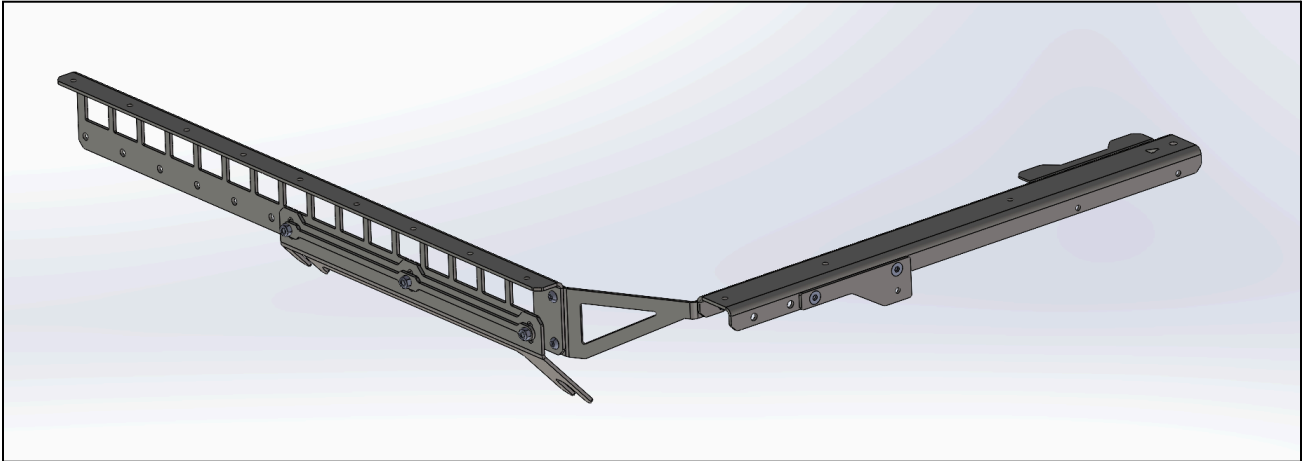


Finally we can attach the **Passenger Connector Bracket** to the **Support Rail** using **(2) Button Head - M6x14 mm Bolts** and **(2) Nylon Insert - M6 - 1.00 mm Hex Nuts**



Step 3 - Install the perimeter pieces

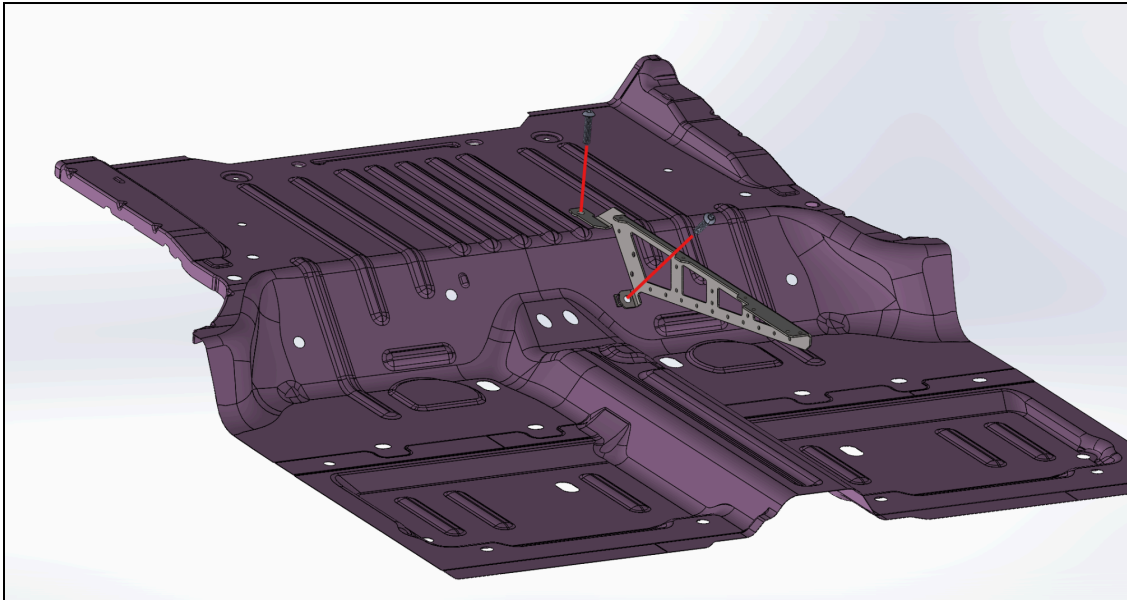
By Now you should have the following two pieces constructed:



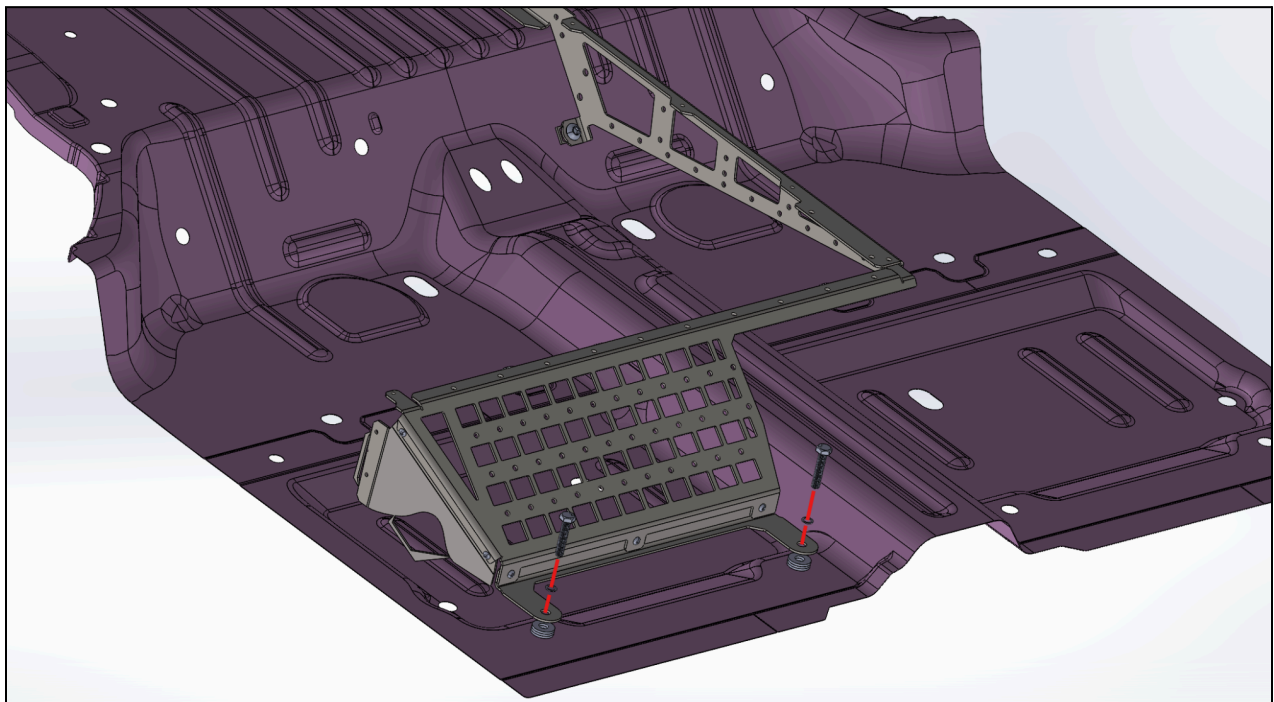
These two pieces along with the **Inner Passenger Floor Bracket** form the basis on which the passenger plate will be installed.



First we need to install the **Inner Passenger Floor Bracket** into the base of the car. To do this we will use **(2) Button Head M12x50 mm Bolts** and **(2) M12 Flat Washers**

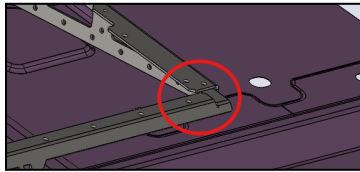


Now we will install the front passenger support piece we constructed. We begin by using **(2) M10x50 mm Hex Head Bolts** and **(2) M10 Flat Washers** to secure the two tabs of the **Lower Driver Bracket** onto the passenger seat anchors. Recall that we placed the **(6) 12 mm inner - 28 mm outer Aluminum spacers** on these anchors in the preparatory steps of the assembly.

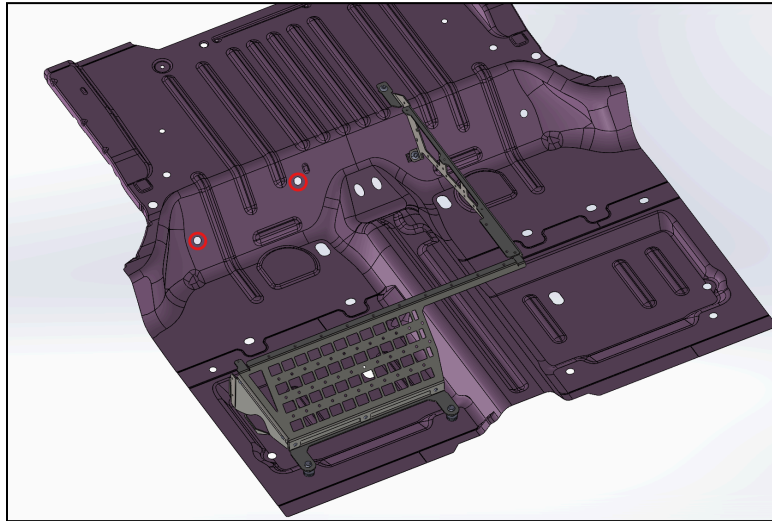


Note: Ensure that the right side of this piece rests **below** the flange of the previously installed bracket

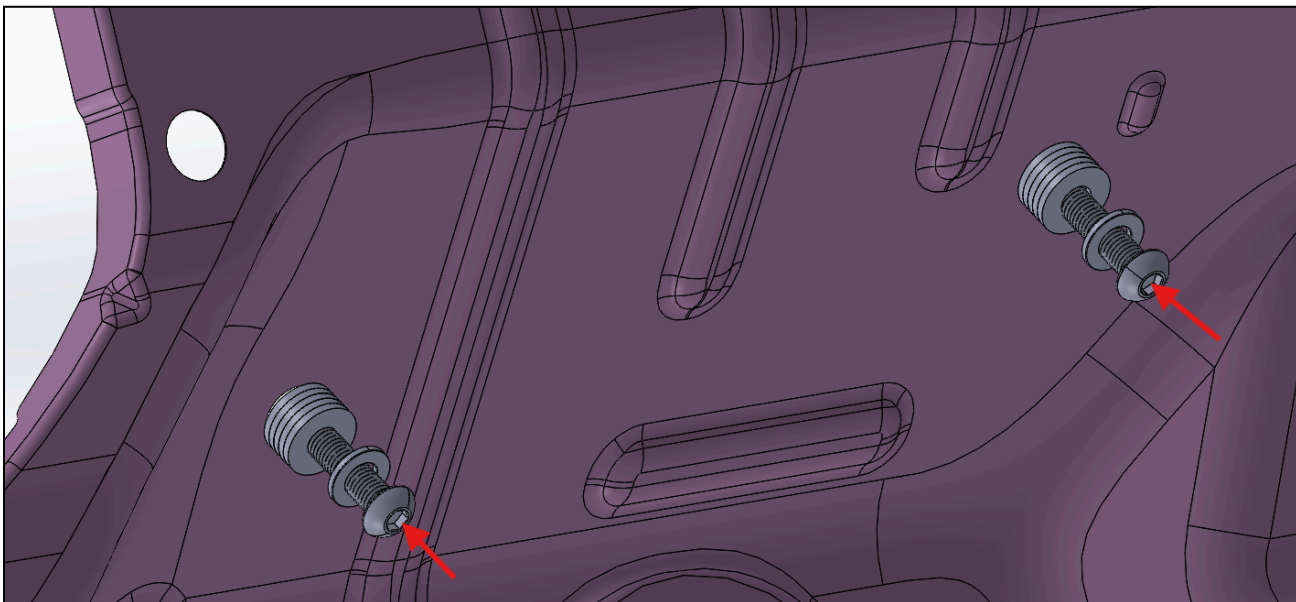




To attach the final frame piece we need to place **(5) 12mm inner - 28 outer Aluminum Spacers** on top of one another and insert a **M12x50mm Button Head Bolt** in each of these holes in the rear of the rear passenger seat here:



Screw the bolts in partially such that there is a space between the washers and bolt head as shown below. Insert an extra M12 Washer as well.

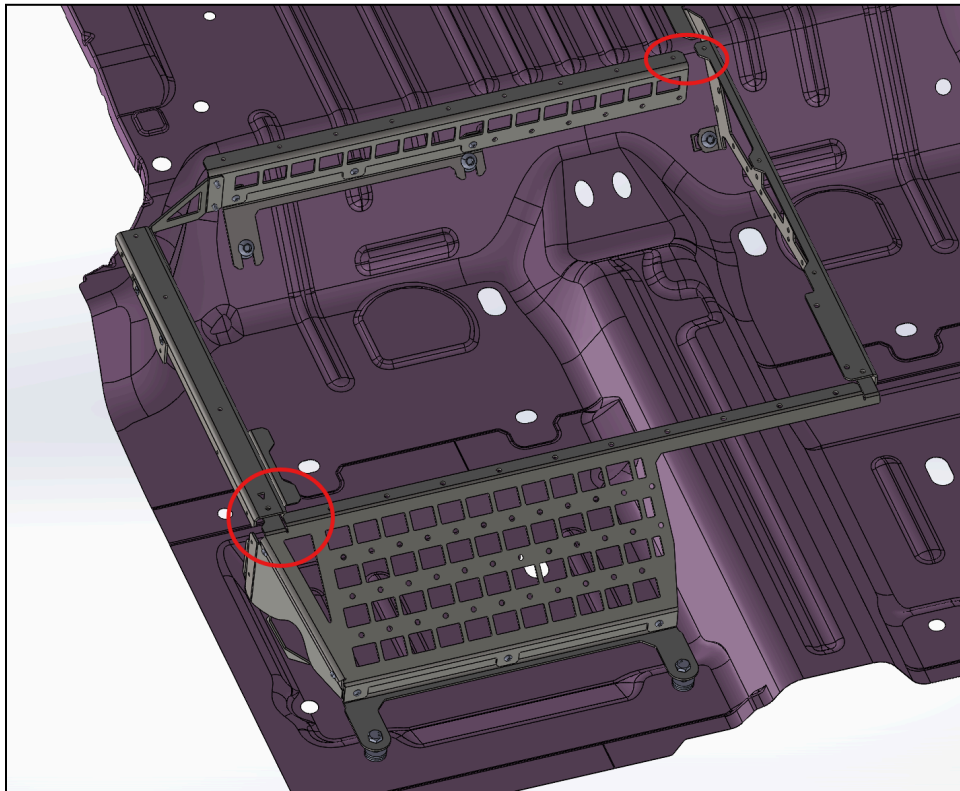


The Bracket can then easily slide into place in the gap between the button head & M12 washer and the 5 stacked spacers (The M12 washer should lay between the flange and button head as shown below)



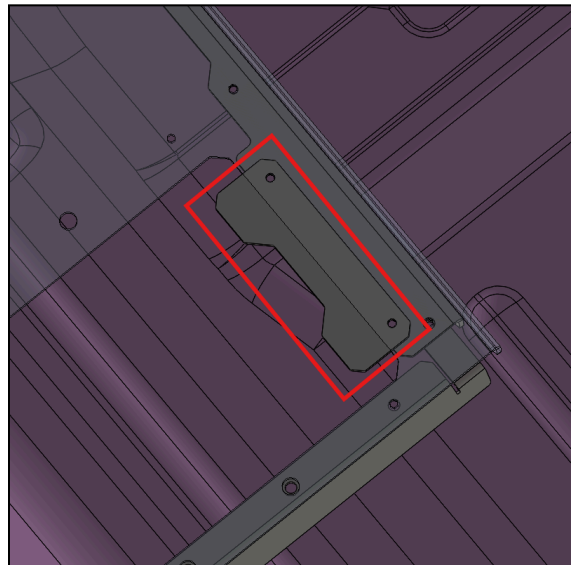
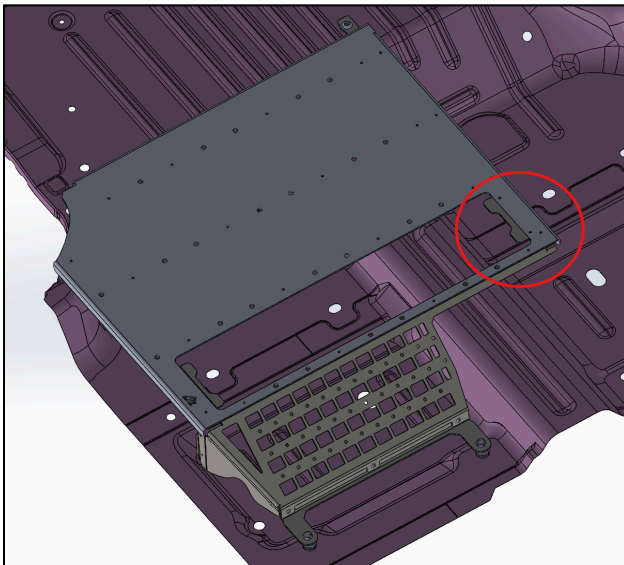
Once again, make sure that on the front left corner of the frame that the flange of the passenger support piece rests **below** the piece we just added. There should also be a slight gap between flanges on the top right corner.



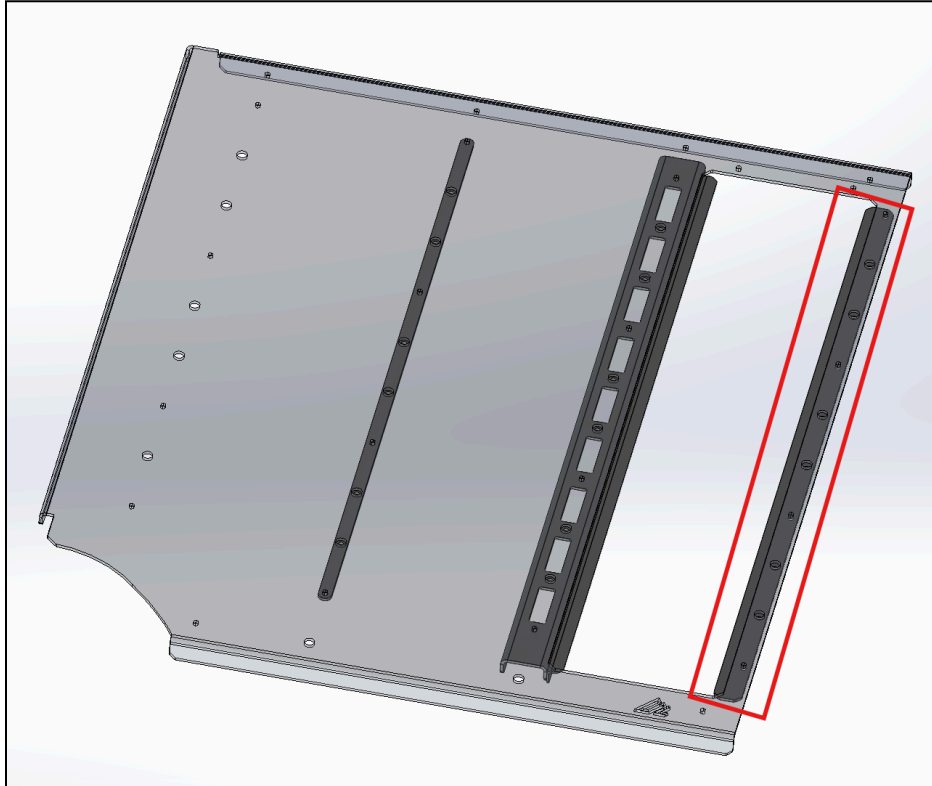


Step 4 - Install the plates

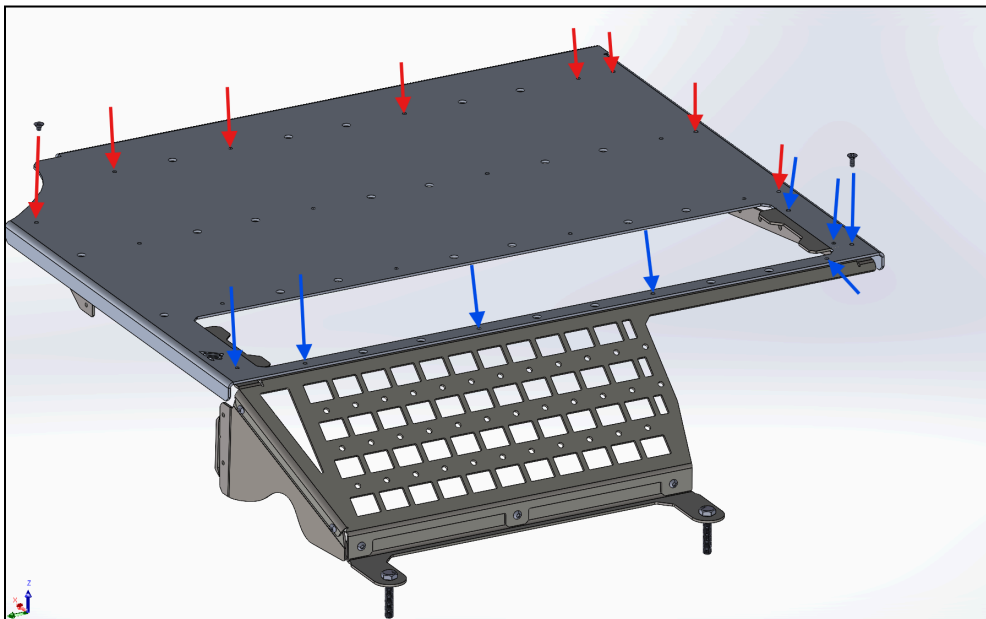
We're now on the home stretch! Now that the frame is set, we can install the **Passenger Plate** Using **(8) Flat Head - M6x14 mm Bolts** and **(8) Flat Head - M6x8 mm Bolts**. Before we do this however, we need to position the **Inner Passenger Access Door Bracket** on the front right corner of the frame because this bracket will be fixed into place with the same bolts that fasten the passenger plate in place.



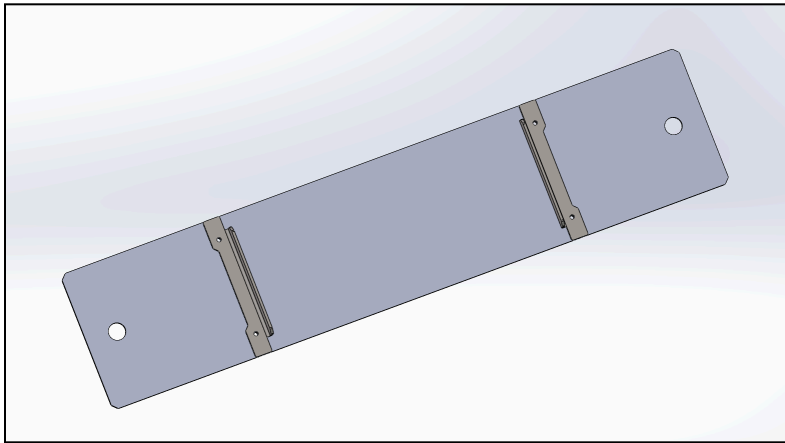
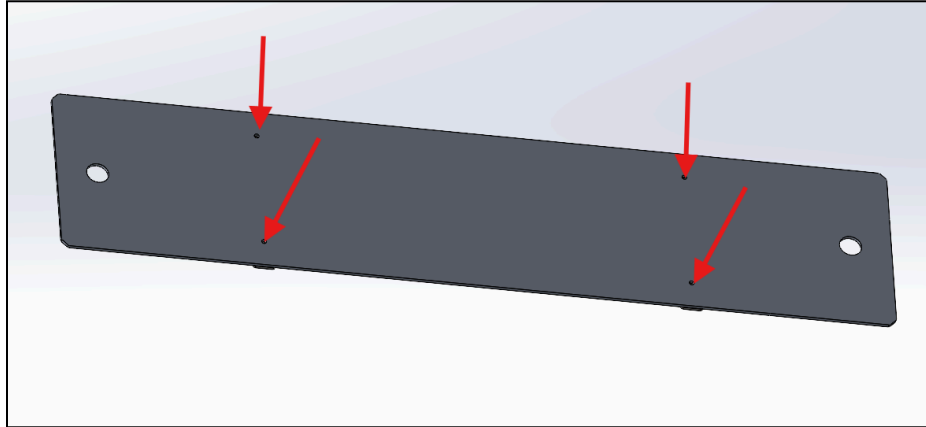
We also need to place the **Nut Plate** under the panel in the same fashion



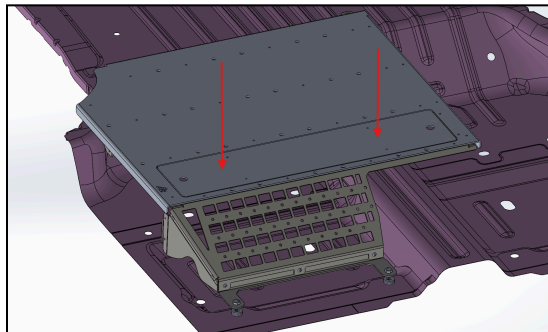
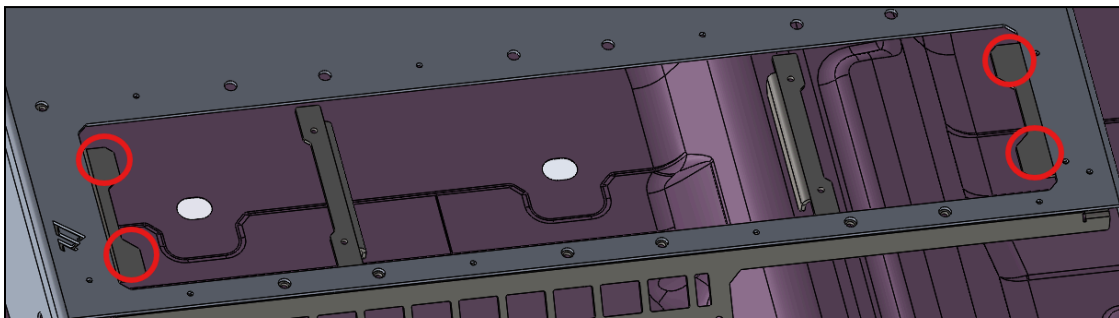
Once the bracket is aligned and the **Passenger Plate** is directly aligned over the holes of the frame, we can install the securing bolts. **Flat Head - M6x14 mm Bolts** are indicated with blue arrows while **Flat Head - M6x8 mm Bolts (No Nuts Required for Either)** are indicated with red arrows



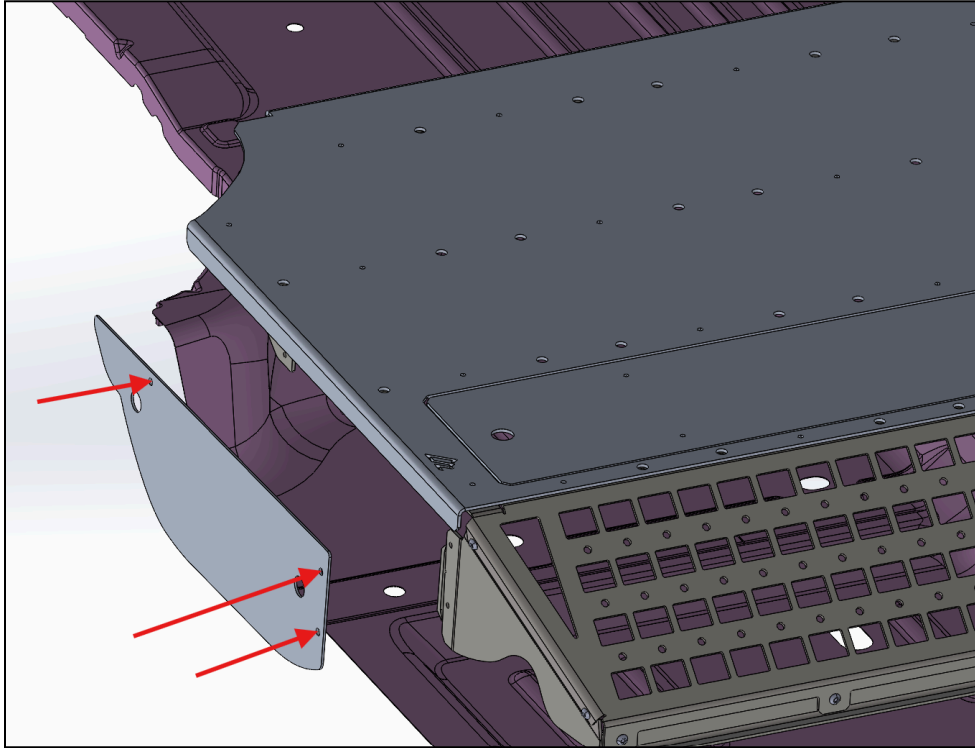
Now install the **Passenger Access Door Braces** using **4 Flat Head - M6x8 mm Bolts (No Nuts Required)**



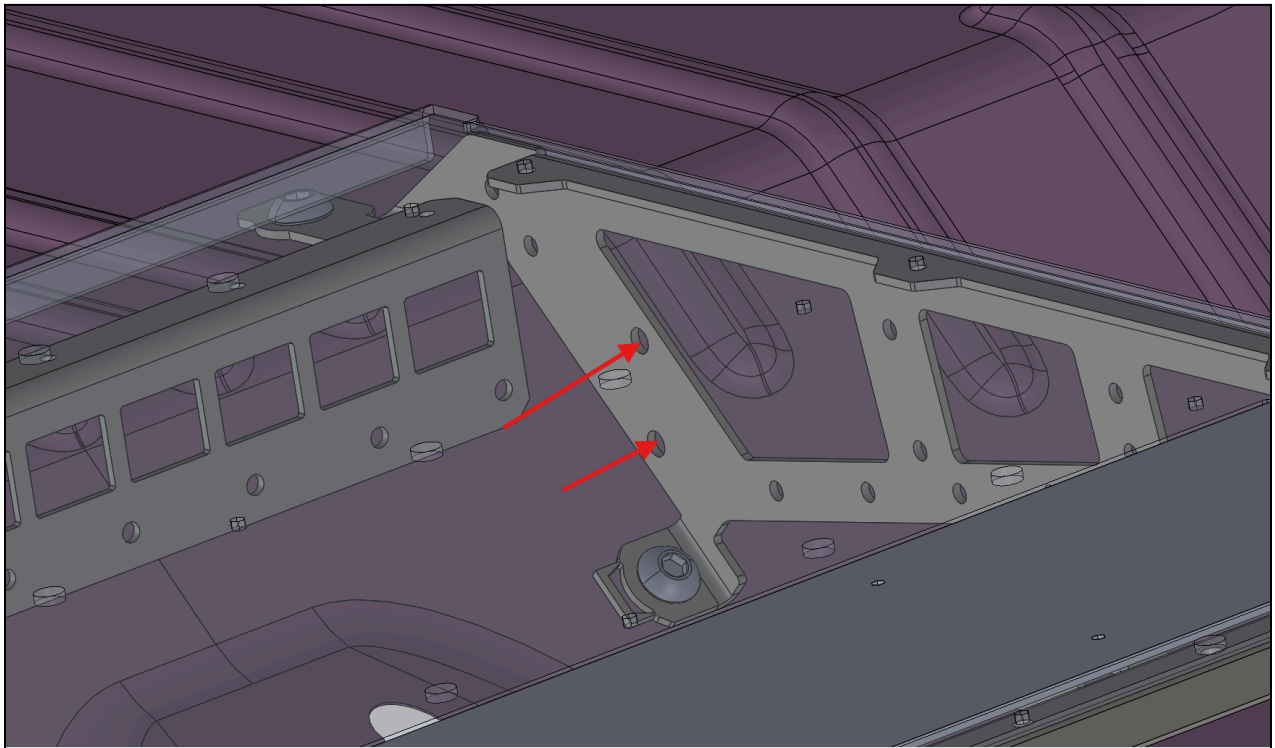
Once done, place each of 4 3/4" - Round Magnets on the four spots shown below and simply set in its slot in the Passenger Plate



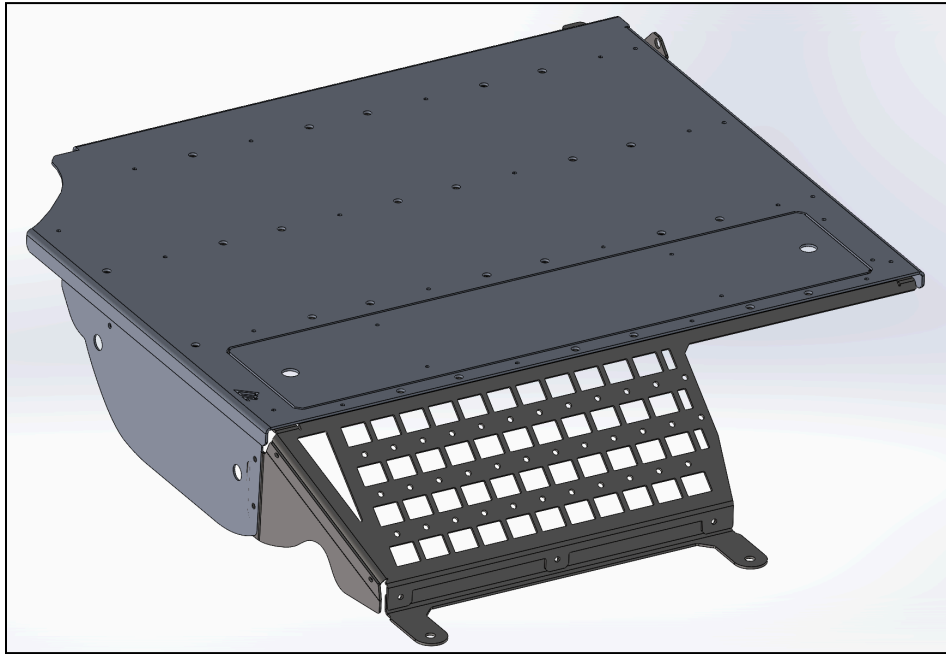
Finally, attach the **Passenger Side Panel** to the frame using **3 M6x14 mm Thumb Screw Bolts**



Note: If you are solely purchasing the 60% side, make sure to insert 2 M8x16 mm Button Head Bolts and 2 M8 Nylon Insert Nuts into the Inner Passenger Floor Bracket to complete the rear driver side seat pivot.



Your 60% rear seat delete is complete!



Share Your Photos!

We take great pride in building our products and we hope that pride extends to you after installing your [Insert Name of Product]. If you are able to share your photos online (Facebook and Instagram), please tag **@AmericanAdventureLab**. We would love to see how it turned out and give you some reciprocal attention in return!

Congrats! You're all done!

Thank you!

At American Adventure Lab, we strive to improve anywhere we can. If you experience any issues with this product or have any suggestions, please let us know.

If you have any questions or concerns, please don't hesitate to reach out to us at 385.202.4188 or via email at Support@erp.adventurelab.com.

